

The background features a dark blue to purple gradient with several overlapping circular patterns. Some circles have tick marks and numbers, resembling a dial or a scale. The numbers range from 140 to 260. There are also some dashed lines and arrows pointing in various directions.

# HOSA UPDATES

SUMMER CONFERENCE 2024



# CONTACT INFORMATION

2024-2025

# NC HOSA Contact Information

Phone Number: 336-756-7776

Mailing Address:

NC HOSA

PO BOX 430

Mount Airy, NC 27030



**DO NOT** mail anything to Raleigh or Sylva. We will not receive them.

## EMAIL ADDRESSES

- General Information: [nchosa@nchosa.org](mailto:nchosa@nchosa.org)
- Jennifer Epperson:  
[Jennifer.Epperson@nchosa.org](mailto:Jennifer.Epperson@nchosa.org)
- Board of Directors: see contact information in the Advisor Handbook on the website
- Regional Board Reps: email listed on the region page of our website



# ADVISOR INFORMATION

- NC HOSA needs your contact information to update records
- Please be sure to complete this mandatory form
- [NC HOSA Advisor Information Form 2024-2025](#)
- Listed under advisor handbook
  - Section D
  - “Local Chapter Advisor Information Form”



Please update email signature blocks for both your computer based email and your cell phone email

SIGNATURE  
BLOCKS  
FOR  
COMPUTER  
MOBILE

Name

School Name

NC HOSA Region

Phone Number

Spell out the school name

SMHS (Smoky Mountain High School)

SMHS (South Mecklenburg High School)

The background features a dark blue gradient with a starry space pattern. Overlaid on this are several circular gauges or progress indicators of varying sizes and opacities. Some gauges have numerical scales around their perimeters, such as 150, 160, 170, 180, 190, 200, 210, 220, 230, 240, 250, and 260. The text is centered in the middle of the image.

# AFFILIATION

## \$25 per person

2024-2025

# HOSA – FUTURE HEALTH PROFESSIONALS

HOSA-Future Health Professionals

548 Silicon Drive, Suite 101

Southlake, TX 76092

- ***MEMBERSHIP AFFILIATION FEES are mailed here***

800-321-HOSA (4672)

info@hosa.org



# AFFILIATION TIPS

- Make sure names are entered correctly (spelling, capitalization, etc.)
- How names are entered is how names will come out on name tags at all levels of competition
- Email addresses are important for everyone, access to apps for competitions could be affected
- **DO NOT** use school email addresses for students. Schools have firewalls that prevent students from receiving emails from HOSA. This will affect competitive events for your student. Also please do not use advisor emails for students. We had a student at ILC lose a wallet and had an advisor email address listed for them. Advisor was not there. Please also list student cell phone numbers.
- Please ensure that we have a cell phone number and an email address that you check regularly year round
- Advisors must affiliate themselves not just students
- Send all affiliation payments to International HOSA at the Texas address (DO NOT send anything other than affiliation fees to them)



# AFFILIATION INFORMATION

**DO NOT** use advisor or school emails,  
phone numbers, etc for students

The background features a dark blue gradient with faint, light blue technical diagrams. These include circular gauges with scales, dashed lines, and arrows. A prominent scale on the left side of the image has numerical markings from 140 to 260 in increments of 10. The overall aesthetic is clean and professional, suggesting a technical or engineering context.

# INVOICES FROM NC HOSA

2024-2025

# INVOICING PROCESS



NC HOSA will invoice through  
QuickBooks Online

Invoices will come to your email address  
Invoices may be paid via credit card/bank transfer if your school allows  
Membership is the exception – still comes from International HOSA



Please mail the invoice with the check

Mail the invoice with the check  
Keep stub intact with check



Invoices will be sent within the week after registration closes



Invoices are due within 30 days. You will not be able to register for the next conference until your invoices are paid in full.



If you need an immediate invoice it can be printed off of the HOSA system or contact Jennifer Epperson for a Quickbooks version



Registration for SLC and ILC will be blocked for unpaid affiliation and conference fees



# Invoice Tips \$\$\$\$\$\$

- Any affiliations made in the fall semester must be paid by Dec 31, 2024. You will not be able to register for SLC if affiliation is not paid in full.
- All RLC fees must be paid in full before you can register for SLC
- All Spring semester affiliations must be paid before you can register for ILC
- All SLC fees must be paid in full before you can register for ILC
- All affiliation fees & conference fees must be paid in full by June 30, 2025 or you'll be blocked from affiliating the following year until those fees are paid.
- There are NO exceptions to these rules so please plan accordingly.
- Do not assume that your finance office has paid your bills just because you turned them in. Follow up with them frequently. If you are receiving invoices and statements by email then payment has not been received.

# PEOPLE TO KNOW

2024 - 2025





President  
Abby Epperson



President-Elect  
North Central/Northeast Regions  
Aanandi Thakur

# NC HOSA EXECUTIVE COUNCIL (STATE OFFICERS)



Postsecondary/Collegiate  
Vice President  
Clara Smith



Vice President  
Northwest/Piedmont Triad Regions  
Samanyu Manjunath



Secretary  
Western/Southwest Regions  
Tess Totten



Historian  
Sandhills/Southeast Regions  
Emily Nethala



# Executive Council 2024-2025



Abby Epperson  
State President



Samanyu Majunath  
Vice President  
Northwest/Piedmont Triad Regions



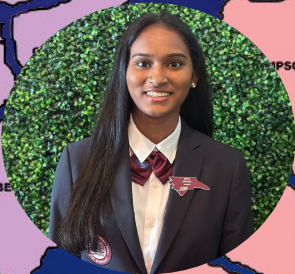
Aanandi Thakur  
President Elect  
North Central/Northeast Regions



Tess Totten  
Secretary  
Western/Southwest Regions



Clara Smith  
Postsecondary/Collegiate Vice President



Emily Nethala  
Historian  
Sandhills/Southeast Regions





# NC HOSA BOARD OF DIRECTORS

- Chair & Piedmont Triad: Melissa Sparks
- Chair-Elect: Kellie Frank
- Immediate Past Chair: Mike Donadio
- Secretary & Sandhills Region: Dawn Larson
- Northeast Region: Alice Hyatt
- Southeast Region: ***vacant***
- North Central Region: Amy Stewart
- Northwest Region: Megan Gambill
- Western Region: Kellie Frank
- Southwest Region: Karl Lynch
- PS/Collegiate/Middle School Division: ***vacant***
- Industry Representative: Eric Southern
- Industry Representative: Jeremy Beane
- Industry Representative: Daniel Combs
- Alumni Representative: Emily Essick
- Alumni Representative: Ashton Rierson
- Alumni Representative: Darius Walker
- NCDPI Representative: Melissa Leeds
- NC HOSA President: Abby Epperson
- NC HOSA President Elect: Aanandi Thakur
- NC HOSA PS/C VP: Clara Smith

# NC HOSA BOARD OF DIRECTORS (cont)

## Ex-Officio Members

- Executive Director: Jennifer Epperson
- State Officer Coach: DaQuan Williams
- Competitive Events Director: Michelle Collins
- Accountant: Denise Bowles
- International HOSA BOD: Nick Ballard

# NC HOSA STATE STAFF



Jennifer Epperson  
Executive Director

[Jennifer.Epperson@nchosa.org](mailto:Jennifer.Epperson@nchosa.org)

336-756-7776



Da'Quan Williams  
State Officer Coach

[Daquan.Williams@nchosa.org](mailto:Daquan.Williams@nchosa.org)



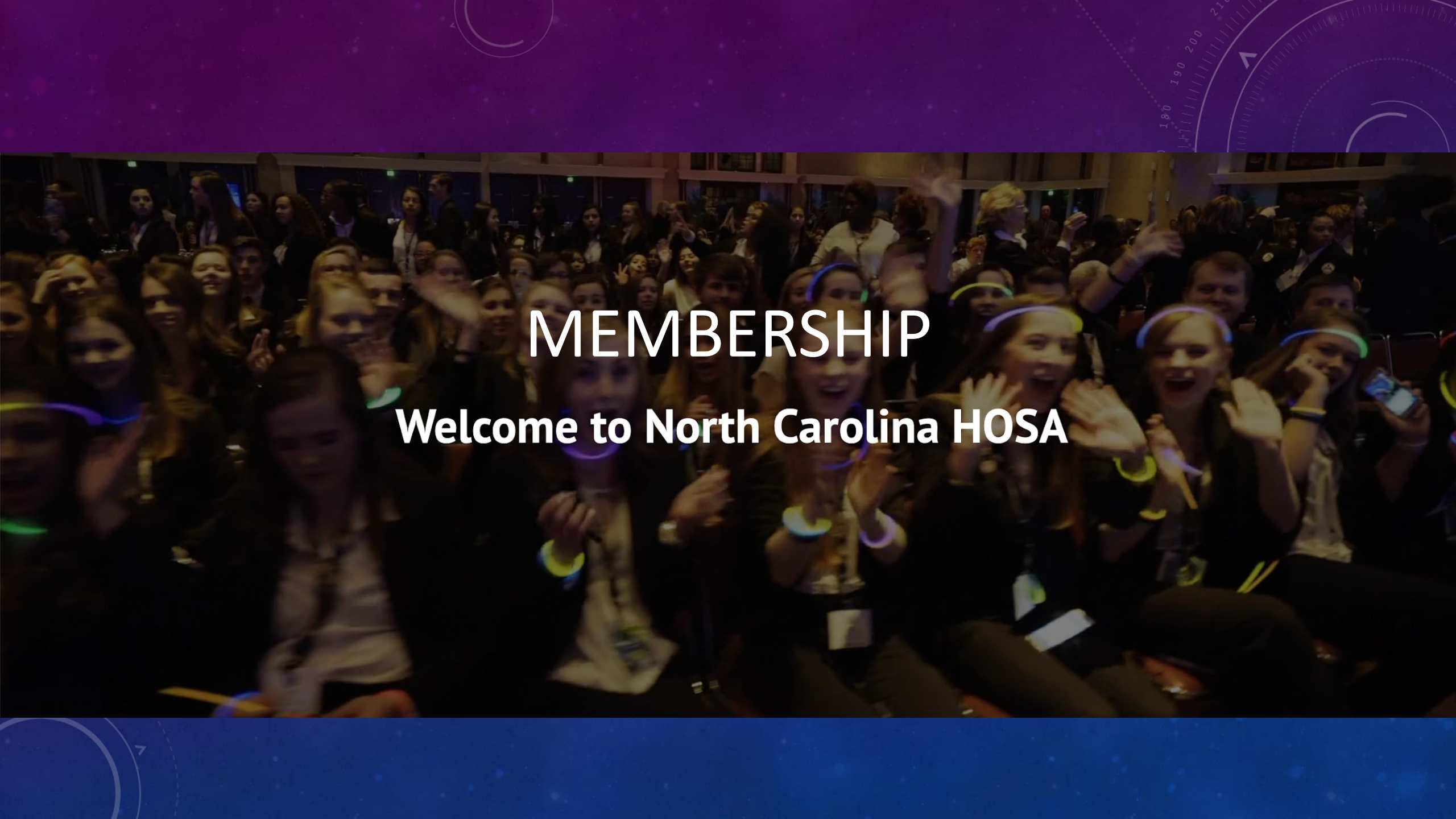


2024-2025  
INTERNATIONAL HOSA  
PRESIDENT

**Nick Ballard**

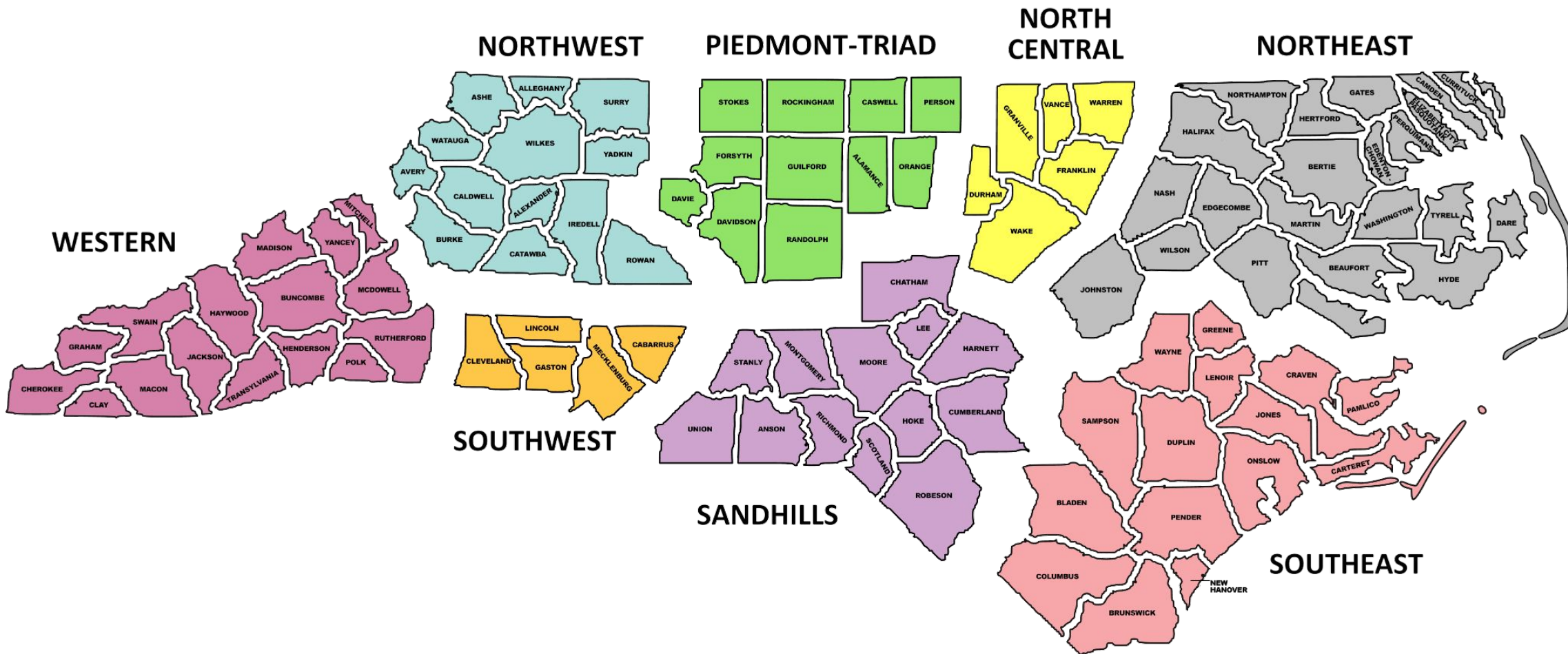
From North Carolina





# MEMBERSHIP

**Welcome to North Carolina HOSA**





---

Secondary (High School) = 192

---

Middle School = 13

---

Postsecondary/Collegiate = 2

**207**  
**TOTAL**  
**CHAPTERS**  
**2023-2024**



---

Secondary = 7,499

---

Middle School = 208

---

Postsecondary/Collegiate = 66

---

Advisors = 338

---

Professional = 9

---

Increase of 6.4%  
from 2022-2023

8,120  
TOTAL MEMBERS  
2023-2024

# RECRUITMENT OF MEMBERS

## Membership drives

- Key times during the year: fall, spring, other times

## It is not just for those in your HSE classes

- HOSA is for anyone interested in health professions

## Middle school interest in your area

- Which schools feed your high school?
- Would you adopt-a-middle school chapter?

## What is in it for the students?

- How do you make it fun?
- What do you teach the students in your meetings?
- What involvement do you offer throughout the year?

# ALUMNI MEMBERSHIP

Counts toward total membership at ILC

---

Have Seniors register as an alumni member

---

How do you keep alumni involved?

---

Would alumni donate to your chapter?



# GOAL FOR MEMBERSHIP

## 8,000 members for 2024-2025

- Growth opportunity in all divisions
  - Middle School
  - Postsecondary/Collegiate
  - Secondary

You can add members throughout the year

- Recommend fall and spring membership drives
- Membership affiliation fees are mailed to:  
HOSA-Future Health Professionals  
548 Silicon Drive, Suite 101  
Southlake, TX 76092

The background features a dark blue gradient with a starry space pattern. Overlaid on this are several technical diagrams, including circular gauges with numerical scales (e.g., 150, 160, 170, 180, 190, 200, 210, 220, 230, 240, 250, 260) and various circular arrows indicating rotation or flow. The text is centered in a clean, white, sans-serif font.

# NC HOSA SCHOLARSHIPS

2024-2025

# NC HOSA SCHOLARSHIPS

---

Application opens February 10, 2025

---

Application link found on SLC page of NC HOSA website

---

Application due March 7, 2025

---

Interviews scheduled if requested by donor



The background features a dark blue gradient with a subtle pattern of white dots. Overlaid on this are several circular elements: a large scale on the left with numerical markings from 140 to 260, and several smaller circles with dashed lines and arrows, suggesting a technical or scientific theme.

# STATE OFFICER CANDIDATES

2024-2025

# STATE OFFICER CANDIDATES

---

Application link found on SLC page of NC HOSA website

---

Application opens January 6, 2025

---

Deadline is February 7, 2025

---

Interview Schedule sent to candidates by February 28, 2025

---

Interviews at Sheraton Greensboro (SLC) March 26, 2025

---

Voting during the SLC 2025 Business Session

---

State Officer Installation will occur during SLC 2025

---

The background features a dark blue gradient with a starry space pattern. Overlaid on this are several semi-transparent circular gauges and progress indicators. One large gauge on the left has numerical markings from 140 to 260. Other smaller gauges are scattered across the scene, some with arrows indicating direction. The overall aesthetic is technical and futuristic.

# VOTING DELEGATES

2024-2025



# VOTING DELEGATES

## Regional Level (FLC)

- 3 per chapter

## State Level

- 5-25 Members = 1 voting delegate
- 26-50 Members = 2 voting delegates
- 51-75 Members = 3 voting delegates
- 76-100 Members = 4 voting delegates
- 101-125 Members = 5 voting delegates
- 126-150 Members = 6 voting delegates
- 151+ Members = 7 voting delegates

## International Level

- Usually the State Officers

# WASHINGTON LEADERSHIP ACADEMY

---

SEPTEMBER 27-30, 2024

WASHINGTON, D.C.

# WASHINGTON LEADERSHIP ACADEMY

Sept 27-30, 2024



Registration Fee: \$600/attendee



Registration Open: August 1 - 31



More info found at [hosa.org/wla](https://hosa.org/wla)



Hotel: Crystal Gateway Marriott room rate \$206 + tax



Hotel reservation deadline September 4, 2024



The background features a dark blue gradient with faint, light blue circular patterns and a scale. The scale is a large arc on the left side, with numerical markings from 140 to 260 in increments of 10. Several circular elements, some solid and some dashed, are scattered across the background, some containing curved lines or arrows, suggesting a technical or scientific theme.

# REGIONAL OFFICER CANDIDATES

2024-2025

# REGIONAL OFFICER CANDIDATES

---

Application link found on RLC page of the NC HOSA website

---

Application opens September 18, 2024

---

Deadline is October 2, 2024

---

Slate Announced October 18, 2024

---

Voting to occur at each Regional Leadership Conference

# REGIONAL LEADERSHIP CONFERENCE



# REGIONAL LEADERSHIP CONFERENCE

## REGISTRATION FEE:

- \$35/ATTENDEE tshirts purchased separately

## FIRST LEVEL OF COMPETITION

REGISTRATION DEADLINE: **October 4, 2024**

**DIGITAL UPLOAD DEADLINE: *NEW***

- October 18, 2024

## ONLINE TESTING:

- October 14-18, 2024
- Register Proctors by October 4, 2024 - proctors will not receive emails until the week of October 7, 2024

# REGIONAL LEADERSHIP CONFERENCE DATES

- Northwest - 11/16/24 at West Wilkes High School
- Western - 11/22/24 at Blue Ridge Comm Coll
- Piedmont Triad - 11/9/24 at Davie High School
- Southwest - 11/23/24 at Shelby High School
- North Central - TBD at Sanderson High School
- Sandhills - 11/2/24 at St. Andrews University
- Northeast - 11/19/24 at Greenville AHEC
- Southeast - No Region Rep

The background features a dark blue gradient with a subtle pattern of white stars and technical diagrams. On the right side, there is a large circular diagram with concentric rings and numerical labels (100, 110, 120, 130, 140, 150, 160, 170, 180, 190, 200, 210) around its perimeter. In the bottom right, there is another circular diagram with dashed lines and arrows. In the bottom left, there is a partial circular diagram with arrows. The text is centered in the upper half of the image.

# STATE LEADERSHIP CONFERENCE

2024-2025



# Greensboro Sheraton Four Seasons & Koury Convention Center



March 26-29, 2025

# SLC REGISTRATION FEES & DEADLINE

\$85/attendee includes t-shirt

Students do not have to compete to attend

Administrator:

one free per chapter - contact NC HOSA to have the administrator fee adjusted after added to registration

State Officers:

register them under your chapter and NC HOSA will adjust fee

***Registration Deadline: January 31, 2025***

***Digital Upload Deadline: February 7, 2025***

# REQUIRED DIGITAL UPLOADS DUE **FEBRUARY 7th**

- All competitors, regardless of division, will submit through the HOSA system
- Instructions for this process are on National HOSA's website in the competition section
- Make sure to read the NEW guidelines for the updates to events
- If the guidelines say there are required digital uploads for ILC then there will be for SLC
- We will be prejudging events for SLC like last year
- Late submissions WILL NOT be accepted



# SLC Hotel Reservations - Changes for 2025

- Room rate is \$163/night
- At this time we are planning to do things the same as last year with an electronic link. The hotel is having that whole system revamped.
- Specific instructions will be posted on the SLC page of the NC HOSA website when available.



The background features a dark blue gradient with a starry space pattern. Overlaid on this are several technical graphics, including circular gauges with numerical scales (e.g., 140, 150, 160, 170, 180, 190, 200, 210, 220, 230, 240, 250, 260) and various circular arrows indicating movement or rotation.

# STATE T-SHIRT AND TRADING PIN CONTEST

2024-2025

# STATE DESIGN CONTEST LINKS & INFORMATION

- Students may submit design ideas for the t-shirt and trading pins provided at ILC.
- Submissions are due by February 22, 2024.
- Top picks will be voted on during the business session at SLC.
- Submission may contain reference to the International theme but not required. Submissions should be unique and catchy.
- Links for submission will be listed on the NC HOSA website under the State Leadership Conference section.





# 2025 International Leadership Conference



**June 18 - 21 Nashville, TN**

The highlight of every year for HOSA members is the HOSA International Leadership Conference. The conference is held in June in different cities across the United States.

The HOSA International Leadership Conference includes:

- Four exciting general sessions
- HOSA University for members, state officers and advisors
- Exhibits presented by health organizations and associations
- Competitive events focused on leadership, professional and technical skills
- Annual business of the national student organization of HOSA by the national voting delegates
- Educational Symposium workshops presented by professional partners that provide information about current healthcare issues
- An opportunity to meet people from across the globe with similar career goals
- Fun, excitement, recognition, and opportunity for all HOSA members!



# INTERNATIONAL LEADERSHIP CONFERENCE

*Intent Forms due April 23, 2025 Quick turnaround, Talk to students ahead of time*

**Cost = \$145/attendee**

*Registration due May 8, 2025 for NC participants*

# MAKE ILC HOTEL RESERVATIONS EARLY!!!

- Held at the Gaylord Opryland Resort & Convention Center
- International HOSA quickly ran out of rooms for ILC this past year
- DO NOT wait until the last minute to reserve rooms
- Have conversations about ILC travel BEFORE SLC
- ILC Hotel reservations are generally made by holding rooms with a credit card. You can then mail check payment and your card will not be charged

# HOSA UNIVERSITY



## Students

Middle School  
Local Members  
Local Officers  
State Officer



## Advisors

New Advisors  
Advanced  
Advisors



Cost: \$25-\$50

# AWARDS

If you are not present to accept awards  
at RLC and/or SLC:

EMAIL [NCHOSA@NCHOSA.ORG](mailto:NCHOSA@NCHOSA.ORG)

You will be invoiced for the shipping  
cost





MEMBERSHIP  
AFFILIATION  
SYSTEM  
&  
CONFERENCE  
MANAGEMENT  
SYSTEM

- Ensure your information is correct
- Change region if applicable
- Forgot your password?
- Once members are affiliated, they are NOT deleted
  - Collect your affiliation fees prior to affiliating the member
  - Ensure affiliated members have a ***personal*** email in the system not a school email address
- Need a chapter number?
  - Complete NC HOSA Help Desk Ticket

The background features a dark blue gradient with faint, light blue circular patterns and a scale. The scale is a large, semi-circular arc on the left side, with numerical markings from 140 to 260 in increments of 10. Several smaller circles and arcs are scattered across the background, some with arrows indicating direction. The overall aesthetic is technical and modern.

# COMPETITIVE EVENTS UPDATES

2024-2025

## COMPETITIVE EVENTS UPDATES

- HOSA will post updates as available
  - See [www.hosa.org](http://www.hosa.org) for more information
  - Links to information are on the NC HOSA website
- Guideline updates are posted September 1
  - Please review for changes
  - You can see the 2024-2025 CE Preview by visiting <https://hosa.org/ceusefultools/>

# COMPETITIVE EVENTS UPDATES

- North Carolina HOSA follows International HOSA processes for competitive events – review general rules and regulations
- Competitors may only compete in one competitive event but may do an unlimited amount of recognition events
- There are multiple changes to resources for many events. Review the new guidelines carefully
- Be sure to look at the chart on the Regional Leadership Conference page of the NC HOSA website to find event adaptations for those competitions



# New Events for 2024-2025

ATC Test

Environmental Health

Secondary

Patient Care Technician (test/skills)  
Occupational Therapy (test only 24-25)

Recognition

Health Literacy Ambassador

# Advisor Competitive Event Responsibilities

- ALL advisors attending any of the HOSA conferences should be registered as an advisor for the conference and bring at least one chaperone with them
- You are **REQUIRED** to help with competitive events at **ALL** HOSA conferences
- Bring someone to help with your students
- This is part of the Advisor Code of Conduct that each advisor signs with affiliation
- Competitive events **DO NOT** happen without advisors

# 2024 RLC Changes and other updates

- CPR/First Aid and Nursing Assistant will have round 2 skills at all RLCs
- For RLC, only 1 picture will be submitted for Health Career Photography
- ***New this year - Digital Uploads for RLC***
- Required digital uploads will be done for RLC and SLC. Read the guidelines carefully to determine which events have that requirement
- There will be prejudging for RLC and SLC
- In an effort to speed up RLC awards only the top 5 will be called to the stage during awards; Only top 3 medals will be awarded with no finalist pins
- America's Blood Centers and the new American Red Cross events will not be awarded until ILC. Area blood agencies are welcome to recognize schools for blood drives as usual at SLC

The background is a dark blue gradient with faint, light blue technical graphics. On the right side, there are several circular gauges or dials with numerical scales (e.g., 100, 110, 120, 130, 140, 150, 160, 170, 180, 190, 200, 210) and arrows. There are also dashed lines and other circular patterns scattered across the background.

CE Updates from

Adrianna Sloan

Competitive Events Trainer



THANK YOU!  
AND  
QUESTIONS?



KEEP  
CALM  
AND  
HOSA  
ON!